

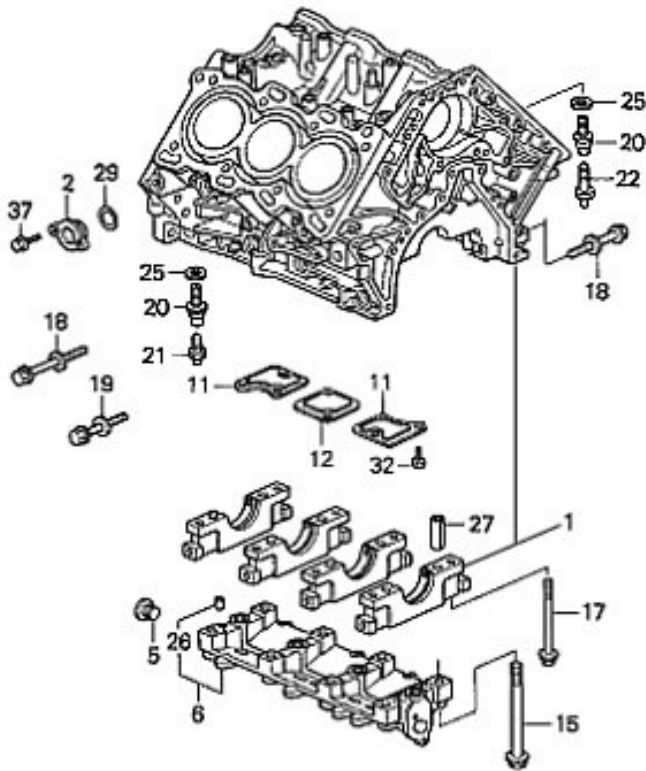
CORE RETURN INFORMATION SHEET

Part no. ENPP-1931 - NSX Cylinder Block

Core charge: \$2,500.00

Last updated: 12/29/09

- When returning your core cylinder block to ScienceofSpeed, the following components must be included with the cylinder block, as shown in the diagram below. These components were included with the short block sent to you. The cost of any missing or damaged components will be deducted from the core refund.



- 1 – cylinder block (part 1)
- 1 – set, main caps, matched to block (part 1)
- 8 – dowel pin, main caps (part no. 27)
- 1 – girdle (part no. 6)
- 2 – dowel pins (part no. 26)
- 8 – flange bolt (part no. 15)
- 8 – flange bolt (part no. 17)
- 5 – washer-bolt (part no. 18)
- 3 – bolt-washer (part no. 19)
- 1 – sealing bolt (part no. 5)
- 1 – bolt, flange (part no. 37)
- 1 – cap, sealing (part no 2)
- 1 – o-ring (part no 29)
- 2 – plate (part no. 11)
- 1 – plate (part no. 12)
- 8 – bolt, hex (part no. 32)
- 1 – front bleeder valve assembly (part no. 25, 20, 21)
- 1 – rear bleeder valve assembly (part no. 25, 20, 22)
- 1 – oil pump & fasteners (not shown)

Crankshaft, pistons, connecting rods, etc. are not required.

Any extra components sent with core not on the list above will be discarded.

- Note: The cylinder block may have scratches or scores on the cylinder sleeve. The main journals must not have any scratches deeper than .01". No part of the block may be cracked or broken. No threads may be cross threaded or otherwise damaged. Oil pump must not be damaged from contamination.
- The core must be returned within 60 days of receipt of product. **Core charges can not be refunded after 60 days.**
- Please reuse the crate supplied by ScienceofSpeed. Failure to return crate will result in a \$50.00 crate charge deducted from the core refund.
- Refunds will be processed within 5-10 business days of receipt of the core.